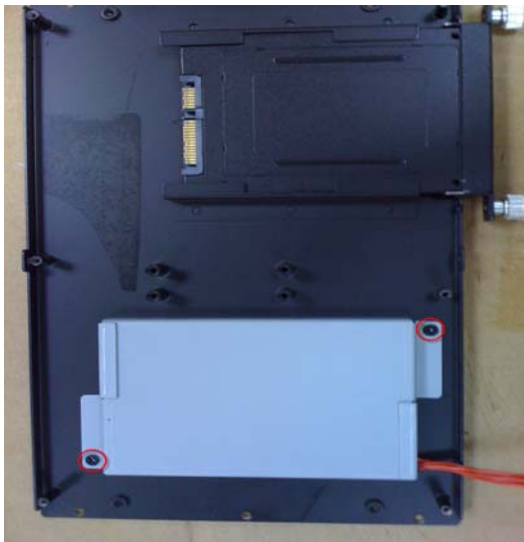


FleetPC-5 Battery Kit Installation Guide



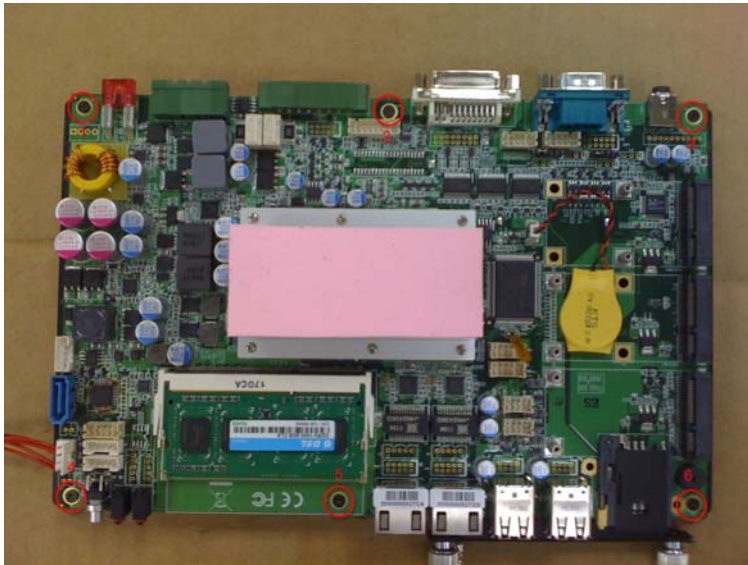
Picture1.

Step1. Unscrew 6 screws as shown picture1.



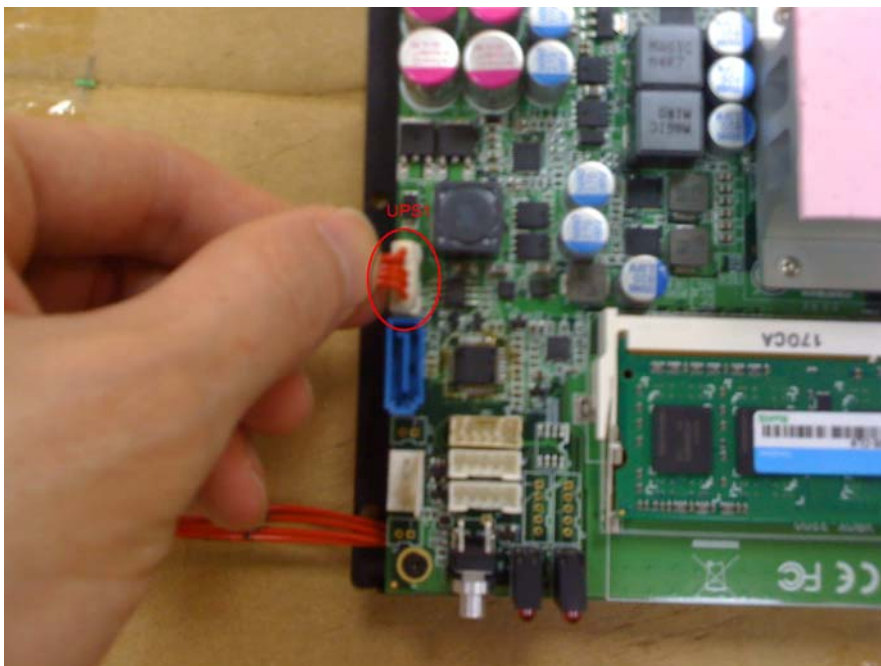
Picture2.

Step2. Put Battery kit on the bottom cover and screw 2 screws as shown picture2.



Picture3.

Step3. Screw 6 screws as shown picture3.



Picture4.

Step3. Connect the cable to "UPS1" connector as shown picture3.